



Native Timber Harvesting in East Gippsland

VicForests' East Gippsland region covers more than two million hectares in the eastern-most part of the State.

This region is home to some of the most productive timber harvesting forests in Victoria. These forests play a crucial role in Victoria's sustainable timber industry.

The native timber industry has a long history in the region and continues to provide significant employment opportunities for the community in eastern Victoria.

Total area in East Gippsland: 2,180,000 ha¹
Total amount of forest in East Gippsland: 1,630,000 ha
Amount of area harvested each year in East Gippsland: Approx. 3,700 ha per year (0.2% of total forest area)

National Parks and Conservation Reserves in East Gippsland

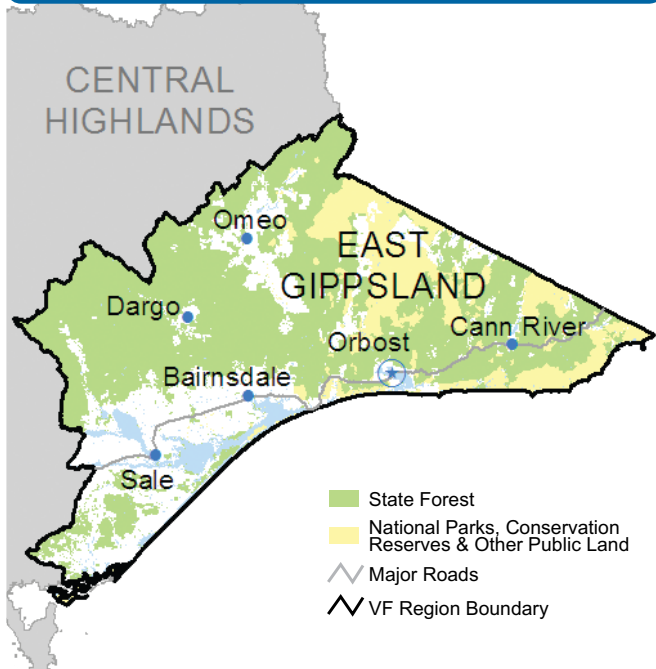
There are 582,000 hectares² of forest in East Gippsland protected in national parks and conservation reserves.

This area includes the iconic Snowy River, Errinundra and Croajingolong National Parks.

These parks and reserves protect many of Victoria's unique natural assets including old growth forests, rainforests, sites of significance and threatened plants and animals.

This includes the East Gippsland National Park, created in October 2010, which covers 45,000 hectares³ and incorporates the Goolengook Forest.

VICFORESTS' EAST GIPPSLAND REGION





Old Growth forest in East Gippsland

We often hear the phrase ‘the last remaining stands of Old Growth forest’. However, there are 224,000 hectares⁴ of old-growth forest in East Gippsland.

The majority of Old Growth forest in the region, over 80%⁵, is protected in national parks and conservation reserves areas meaning it is not available for timber harvesting.

Small areas of Old Growth forest in East Gippsland are available for timber harvesting and VicForests harvests approximately 330 hectares each year.

Despite the small amount of Old Growth forest harvested each year, the timber produced by these forests is some of the highest quality timber in Victoria. It is used in high-grade furniture and building products where strength is a vital quality in timber.

**Amount of Old Growth in East Gippsland:
224 000 hectares⁶**

**Amount of Old Growth protected in National Parks
and Conservation Reserves:
185 920 hectares⁷
(83% of total Old Growth in East Gippsland)**

**Amount of Old Growth harvested in East Gippsland:
Approximately 330 hectares per year
(0.1% of total Old Growth in East Gippsland)**



Employment in the Native Timber Industry in East Gippsland

The native timber industry is a significant provider of employment in the Gippsland region, as well as supplying wood and wood products to meet community demand.

Research recently commissioned by the Department of Primary Industries shows that around 1300 people⁸ are employed by the forestry industry in East Gippsland with more than 80%⁹ of the timber industry business in East Gippsland relying on native timber harvesting.

This research indicates that native forests will continue to provide the majority of employment in the forestry industry in East Gippsland¹⁰.

**Number of people employed by the forestry industry
in East Gippsland: 1289¹¹**

**Percentage of timber industry businesses in
East Gippsland who rely on the native timber industry:
more than 80%¹²**

- ¹ East Gippsland Shire Council
- ² Protecting East Gippsland's old growth and iconic forests 2009 (Department of Sustainability & Environment)
- ³ Protecting East Gippsland's old growth and iconic forests 2009 (Department of Sustainability & Environment)
- ⁴ A Study of the Old-Growth Forests of East Gippsland - What is old-growth forest and how is it being managed in Victoria? (Department of Sustainability and Environment)
- ⁵ A Study of the Old-Growth Forests of East Gippsland - What is old-growth forest and how is it being managed in Victoria? (Department of Sustainability and Environment)
- ⁶ A Study of the Old-Growth Forests of East Gippsland - What is old-growth forest and how is it being managed in Victoria? (Department of Sustainability and Environment)
- ⁷ A Study of the Old-Growth Forests of East Gippsland - What is old-growth forest and how is it being managed in Victoria? (Department of Sustainability and Environment)
- ⁸ Socio-economic characteristics of Victoria's forestry industries July 2010 (Dr Jacki Shirmer, Fenner School of Environment and Society – ANU)
- ⁹ Socio-economic characteristics of Victoria's forestry industries July 2010 (Dr Jacki Shirmer, Fenner School of Environment and Society – ANU)
- ¹⁰ Socio-economic characteristics of Victoria's forestry industries July 2010 (Dr Jacki Shirmer, Fenner School of Environment and Society – ANU)
- ¹¹ Socio-economic characteristics of Victoria's forestry industries July 2010 (Dr Jacki Shirmer, Fenner School of Environment and Society – ANU)
- ¹² Socio-economic characteristics of Victoria's forestry industries July 2010 (Dr Jacki Shirmer, Fenner School of Environment and Society – ANU)

